

## Penthouse con vistas panorámicas a la bahía de Panamá

# \$1,350,000

Ref: 23055

**San Francisco, San Francisco, Panama**

This exclusive penthouse in San Francisco, Panama, offers 806.81 m<sup>2</sup> of elegance and comfort, spread across levels 23 and 24, with an impressive rooftop on level 25. Boasting panoramic views of the Panama Bay and the city, it features 6 bedrooms, 6.5 bathrooms, a service room with a bathroom, and 4 parking spaces, as well as 2 storage units. On level 23, you'll find a sophisticated double-height living and dining area with floor-to-ceiling windows, a family study, one bedroom with a bathroom, 1.5 additional bathrooms, a kitchen, an independent laundry area, and two service rooms. Level 24 offers a cozy family room and 5 spacious bedrooms, each with its own private bathroom, including the master suite with exclusive access to a private garden. Finally, the 96.12 m<sup>2</sup> rooftop provides an i...

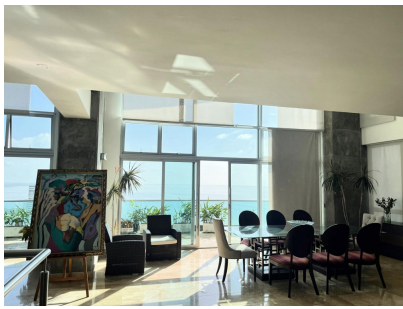
# servvmor

Telephone: +507 2022121

Email:  
info@servvmorrealtv.com



# Gallery



# Property Description

**Location:** San Francisco, San Francisco, Panama, Spain

This exclusive penthouse in San Francisco, Panama, offers 806.81 m<sup>2</sup> of elegance and comfort, spread across levels 23 and 24, with an impressive rooftop on level 25. Boasting panoramic views of the Panama Bay and the city, it features 6 bedrooms, 6.5 bathrooms, a service room with a bathroom, and 4 parking spaces, as well as 2 storage units. On level 23, you'll find a sophisticated double-height living and dining area with floor-to-ceiling windows, a family study, one bedroom with a bathroom, 1.5 additional bathrooms, a kitchen, an independent laundry area, and two service rooms. Level 24 offers a cozy family room and 5 spacious bedrooms, each with its own private bathroom, including the master suite with exclusive access to a private garden. Finally, the 96.12 m<sup>2</sup> rooftop provides an ideal space for entertainment and relaxation, along with an additional storage unit. This penthouse blends design, spaciousness, and natural light, maximizing comfort and privacy while allowing you to enjoy breathtaking sunrises and sunsets with a privileged view of Panama Bay.

# Additional Info

En venta	Beds: 6	Baths: 6
Type: Apartment	Area: 710 sq m	Recámaras: 6
Cuarto de Servicio	Baños: 6	Baño de Servicio
Piscina	Baños de visita: 5	Estacionamientos: 4
Salón de Fiestas	Nivel De Estacionami:	Mantenimiento: 1285
00	Gimnasio	Sala familiar
Balcón	Comedor	Area de Juegos
Studio	Cocina	Elevador
Seguridad	Depósito	Estac
de Visitas	Tipo Agua	Zonificación
Tipo De Aire Acondicionado	Mantenimiento Incluye	Internal Area : 710 sq m